

The Scroll

May 2016

The Official Sigma Alpha Iota Newsletter of
Tulsa Alumnae Chapter, Tulsa Patroness Chapter, and Sigma Gamma Chapter at the University of Tulsa
Region 2, Zeta A Province
Newsletter Editor: Kara Street Email: saitulsaalumnae@gmail.com

Tulsa Alumnae Formal Meeting Saturday, May 14 10:30 am

Location:

Nancy Haswell's Hyde Park Clubhouse

From W 81st St, 2 blocks east of Hwy 75, turn South on Maybelle Ave at Life Church. Go South about 1/3 of a mile. Turn Right at the Hyde Park entrance on to W 84th St S, continue around the traffic circle and up the hill to the club house. Come to the main entrance and Nancy Haswell or one of the hostesses will show you to community room. Hyde Park at Tulsa Hills may or may not show up on your GPS.

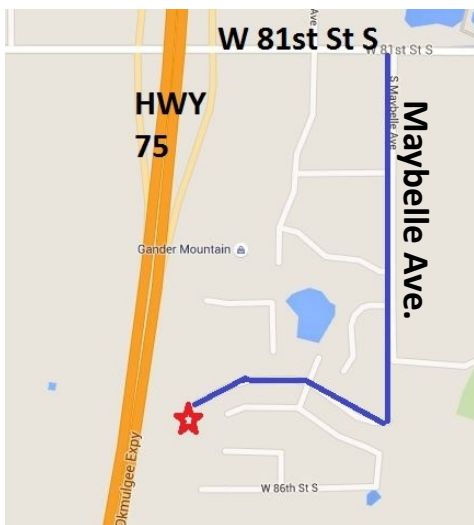
Musicale:

"Music Makes Us Reflect:
Past Successes and Hope
for the Future"

Karen Gingrich

Rachael Burns

Abby Raiford (Sigma Gamma member and Mary Bowles Scholarship winner)



Tulsa Alumnae Meeting Requests

As we plan next year's meetings and activities, please remember that it is an obligation of membership for every member to help with hostessing. We are in need of hostesses as well as meeting locations and musicale performers for next year! When the sign up list comes your way, please find a place to sign up and do your part. If you are not at the May meeting, please contact VP Hostess Mary Hargrave and VP Programs Beth Keener to see how you can help. Thank you!

In this Issue

Chapter Communications	2
In Memoriam / 2016 Service Project	3
2016 Spring Luncheon	4
Fraternity Education / Ms. Senior Oklahoma	5
People of Note / Musical Sudoku	6



Don't forget to check out the new Tulsa Alumnae webpage at <http://saitulsaalumnae.wix.com/saitulsa> and leave us a comment!



Sigma Gamma Communications, Brettany DeMier

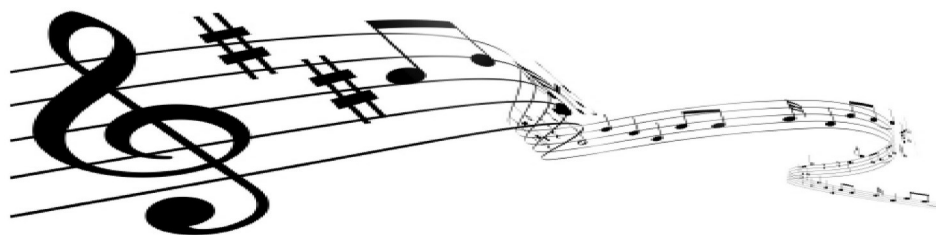
We had such a great time at the Senior Luncheon and would like to thank the Patroness Chapter again for hosting! It is so wonderful to be able to celebrate our seniors every year with them. We are looking forward to helping with Mayfest again this year! Additionally, we are trying to continue our volunteer work with the Broadmoor retirement community over the summer.



Patroness Chapter Communications, Sue Shadley

Our Spring Luncheon was simply beautiful! Thirty-one Sigma Gammas were able to attend, along with several members of the Alumnae Chapter, Province Officer Rowena Mills and Judith Raiford, the Sigma Gamma Faculty Advisor and Assistant Professor of Voice at TU. The tables were decorated in spring colors, the food was excellent, and the weather even cooperated. Awards were presented by the Sigma Gammas, Province Officer Rowena Mills, and the Alumnae Chapter. Our 2015-2016 Patroness Scholarship recipients, Melissa Buchman and Katie Creed, were recognized with framed certificates and each received scholarships of \$3,000 this past academic year. The five graduating seniors, Beth Casey, Katie Creed, Nicole Graham, Heather Ryan and Sarah Thomas, received gifts from the Alumnae and Patroness Chapters. To end the event, the Sigma Gammas performed their Senior Farewell Ceremony.

Special thanks to Patronesses Mollie Williford, Danna Decker, Pam Brocksmith, Sandy Hodges and Carolyn Evans for their generous donations to help make this event possible. It is so much appreciated by the Sigma Gammas and is a wonderful conclusion to their SAI year.



Tulsa Alumnae Chapter Communications, Patty Mandrell

Our end of the year activities are upon us—chapter meeting salad brunch and Mayfest. We still need Mayfest volunteers for Friday, May 20 if you can spare an hour or two to help with our most important fundraiser. The salad brunch promises to be as tasty as always. Special hand drawn thank you cards from our 4th grade service project recipients will be on display. We hope to see you at both events!



In Memoriam - Mary May

By Sue Amstutz

Tulsa Alumnae VP Ritual

The Tulsa Alumnae chapter is saddened to report the passing of long-time member Mary May who died on April 24 in Tulsa. Mary was a 1953 initiate of Alpha Zeta Chapter at Oklahoma Central University where she was an organ and piano major. She affiliated with Tulsa Alumnae on April 24, 1984, and was an active member till the day of her death. Mary received her 50-Year Membership Certificate in 2003, her 60-Year Membership Certificate in 2013, and her Sword of Honor, presented by Tulsa Alumnae, in 2002. Always a reliable individual, Mary was three times elected Hostess Vice President, in 1997-1998, again in 1998-1999, and once more in 2003-2004. She chaired a number of committees during her years as a member of the chapter, including Ways and Means, Awards, Courtesy, Nominating, and Telephone. Mary served as a member of the telephone committee on three occasions other than the times in which she was chairing the committee.

Mary could be counted on to provide refreshments when it was her turn. In her later years, she often teamed up with Jeannine Smith and Ava Butts for what was always more of a feast than just a few cookies when these three ladies provided goodies for a meeting. Mary will be remembered with the SAI Memorial Ritual during the chapter's May 14 Formal Meeting. Vita brevis, Ars longa.

2016 Tulsa Alumnae Service Project



Tulsa alums Barb Derby, Karen Kingrich, Tracy Crow (holding the box of recorders), Sue Amstutz and Patty Mandrell visited this fourth grade class at Rosa Parks Elementary School in Tulsa to present a set of 25 classroom recorders. The recorders were the Tulsa Alumnae Chapter's 2016 education-related Service Project, and judging from the smiles all around, the project was a great success.



2016 Spring Luncheon

April 30, 2016



Sigma Gamma members who attended the Spring Luncheon on April 30. The Luncheon was held in honor of the Sigma Gamma Seniors and was hosted by the Tulsa Patroness Chapter of Sigma Alpha Iota.



Sigma Gamma 2016-2017 President Brettany DeMier with Tulsa Alumnae Board members Sherye Halliburton, Patty Mandrell, Karen Gingrich, and Patroness Sue Shadley.



Tulsa Alumnae Chapter Treasurer and President, Sherye Halliburton and Patty Mandrell, presenting gifts to the Sigma Gamma seniors.



Meet Tosca Berger Kramer

Fraternity Education with Sue Amstutz

Tosca Berger (Kramer) was the second Honorary Member of SAI to be initiated by the University of Tulsa's Sigma Gamma Chapter (Marie Hine was the first.) Born in New Zealand the same year Sigma Alpha Iota was founded (1903), Tosca studied violin and viola in Germany, where she quickly established herself as a solo artist. In the 1920s, the Berger family was on tour in America when her father became ill in Tulsa. City leaders encouraged the Berbers to settle in the Oil Capitol. Because of the friendliness of folks in their new hometown, Tosca's parents became instrumental in establishing the Tulsa Philharmonic, the city's first symphony orchestra. Tosca herself was for a time concertmistress of the Philharmonic and later filled the principal violist role in the orchestra. Tosca married Adolph Kramer, himself a violinist and maker of stringed instruments. When Tosca was in her 60s, she enrolled at Eastman School of Music where she earned first a Master of Music degree and then a Doctorate in Musical Arts. Tosca appeared as soloist with the Philharmonic on numerous occasions. She regularly took part in the SAI annual Christmas Vespers. A recording of her playing was donated by the Kramers to SAI's Memorial Library. Tosca continued playing solo or chamber music recitals on violin, viola, and viola d'amore throughout her life. She has been described as "perhaps in the history of Tulsa its most outstanding musician."

Ms. Senior Oklahoma

Congratulations to Tulsa Alumnae member Lynette Danskin who was selected Ms. Senior Oklahoma during a pageant held on Saturday, April 30. Contestants in the pageant represented 32 senior living communities in the Tulsa area. Lynette appeared on KJRH Channel 2's May 2 noon newscast with Amy Synar, Executive Director of the Grace Hospice Foundation which is the sponsor of the pageant and beneficiary of the pageant's proceeds. Wearing her red "SAI dress" and sparkling tiara, Lynette was all smiles during the TV interview, exhibiting the poise and self-confidence of someone accustomed to appearing before an admiring audience. SAIs will recall Lynette's one-woman show "Will Rogers Romance with Betty and America" which premiered on PBS in 2011.

Mayfest is May 19-22

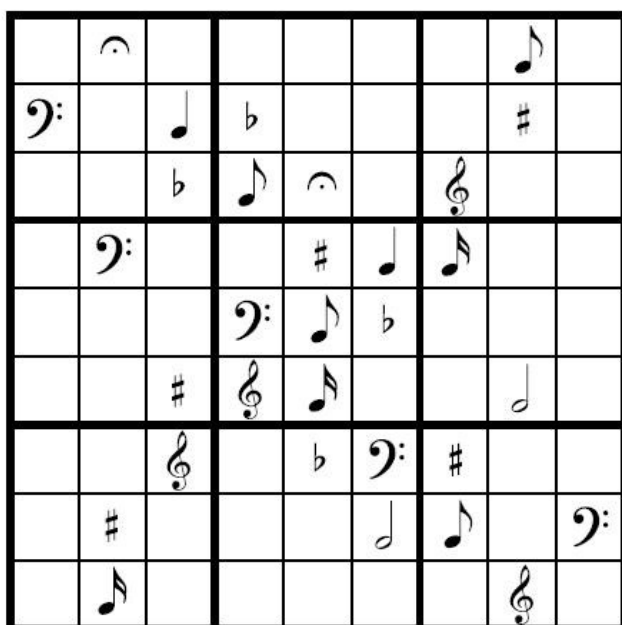
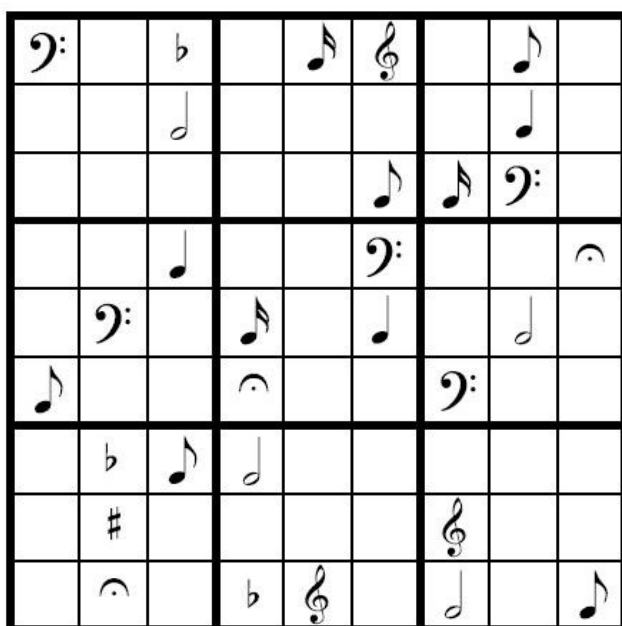
There is still time to sign up for Mayfest! Contact Patty Mandrell to do your part in helping Tulsa Alumnae fund-raise! There are still open slots that need your help!





Musical Sudoku

The rules are simple: just complete the empty boxes in the grid so that every row, every column, and every 3 x 3 box contains one of each of the following musical symbols:



People of Note



Congratulations to Abby Raiford who was named the winner of the 2016 Mary Bowles Scholarship from the Tulsa Alumnae Chapter.



Tulsa Alumnae member Kara Street will be performing in the musical "The Secret Garden" on June 2-5 as part of Summer Stage Tulsa. Tickets are now on sale and can be purchased at summerstagetulsa.org or by calling 918-596-7111



We are thinking of Cindy Harmon during this difficult time.

2016-2017 Dues



Alumnae members, it is time to start thinking of next year's dues. At the May meeting, we will be accepting your local dues before our summer break. If you think you might be gone for our May meeting, feel free to mail your money to our treasurer, Sherye Halliburton. Her address is:

4113 East 42nd Street
Tulsa, Oklahoma 74135

- To be an active, voting member, dues are \$25.
- To be an associate member without voting status, dues are \$10.
- Checks should be made out to Sigma Alpha Iota, Tulsa Alumnae Chapter.
- National Alumnae Association dues of \$35 are paid separately, not to the chapter.